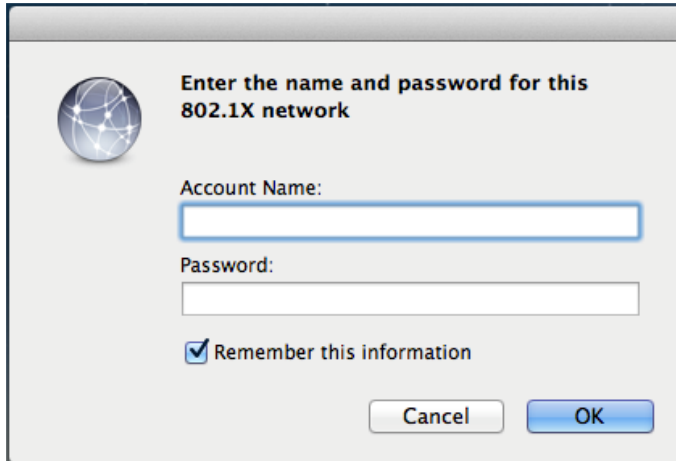


802.1x Configuration Guide for Mac OS X 10.10 and higher:

1. This guide applies to user using Mac OS X 10.10 with 802.1x enabled network.
2. Users have to connect the MAC OS PC to the 802.1x enabled network. Network authentication dialogue box will be automatically opened upon network connection.



3. Type in valid user credentials
 - **Username** : (Enter your "Username")
 - **Password** : (Enter your Password)

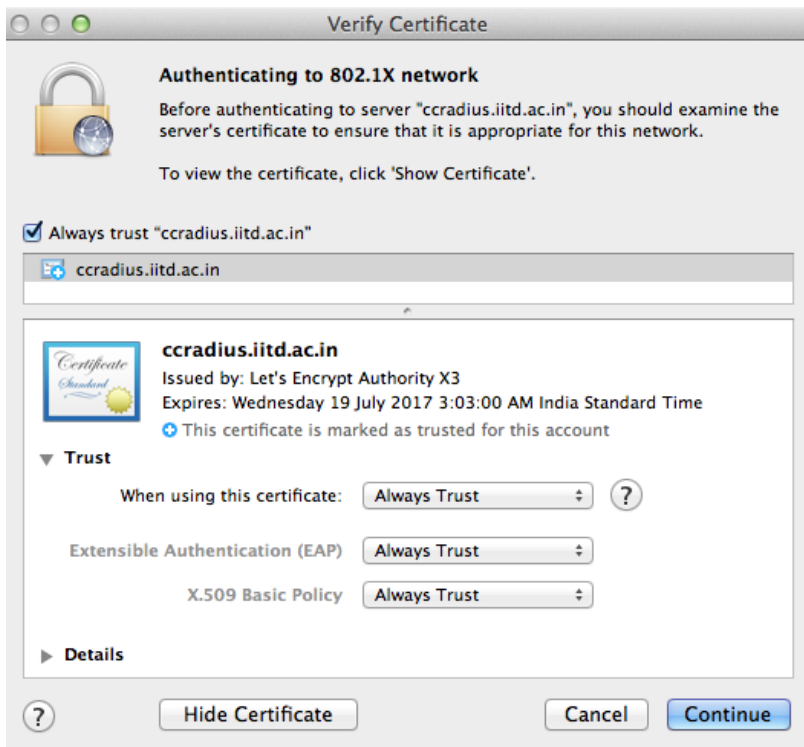
Then click **OK**

4. **Verify Certificate** dialogue box will then appear for user to verify their security certificate.



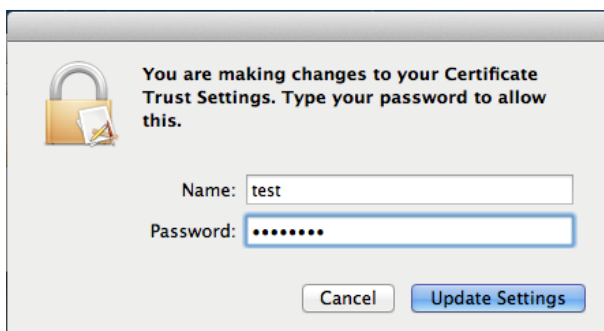
Click on **Show Certificate**

5. Verify that the correct security certificate ccradius.iitd.ac.in has been used.



Then click on **Continue**

6. Enter valid Username and Password to have the administrative right to make changes to the Certificate Trust Settings.



7. Click **Update Settings** to gain network access.
8. You are now connected to IITD Network.