

## Network Configuration Guide for Ubuntu 16

1. Click Network Adapter Icon then select **Edit Connections**

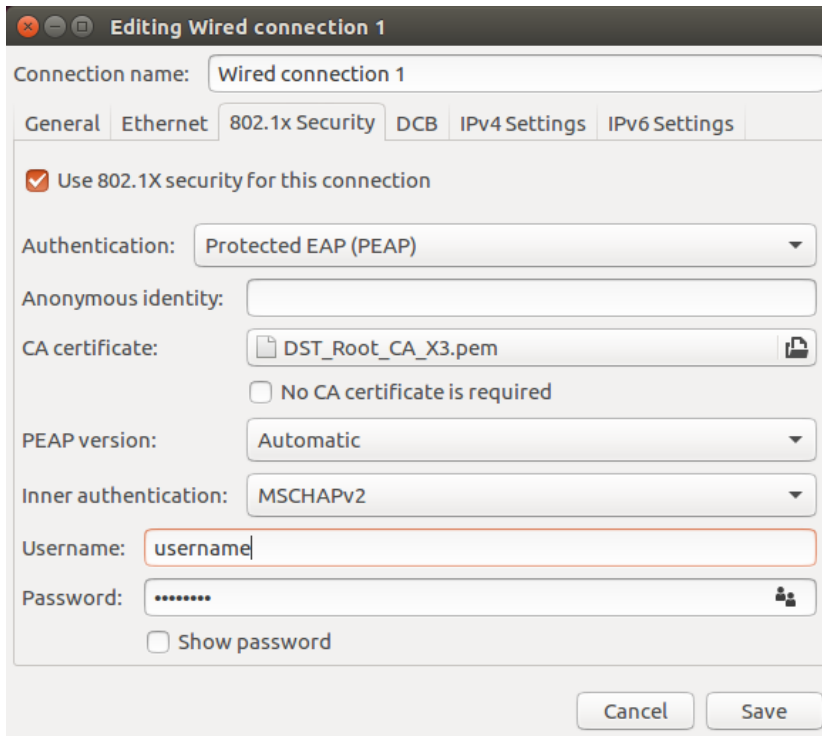


2. Click on **Wired** tab. Select the LAN interface then click **Edit**



3. Click on **802.1x Security** tab. Check *Use 802.1X security for this connection*. Choose **Protected EAP (PEAP)** as Authentication. Download **DST\_ROOT\_CA\_X3.pem** file from <http://cc.iitd.ac.in> website into your computer, and Select the **DST\_ROOT\_CA\_X3.pem** as CA Certificate from your destination file path. Choose **Automatic** as PEAP Version. Choose **MSCHAPv2** as Inner Authentication. Fill in **Username** and **Password**.
  - **Username** : (Enter your "Username")
  - **Password** : (Enter your Password)

Then click **Save**



4. Click Close



5. Now you are successfully connected to IITD network

