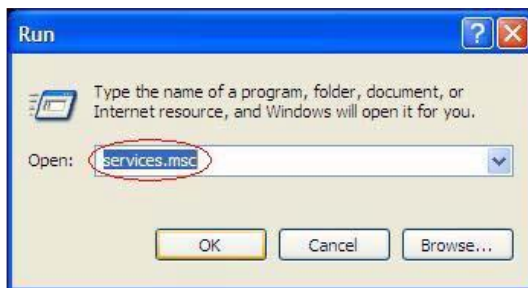


802.1x Configuration Guide for Windows XP Service Pack 3

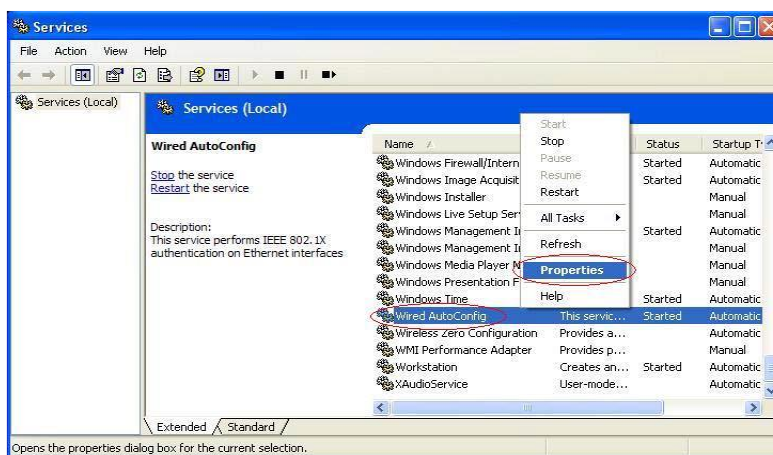
1. Click on Windows XP start menu and then click **Run**



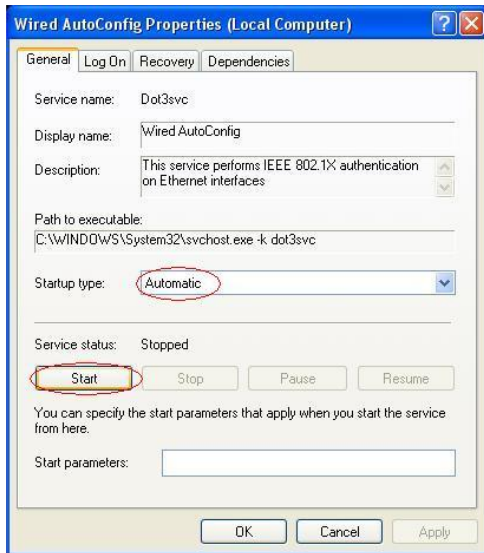
2. Type **services.msc** and then click **OK**



3. Right click on **Wired AutoConfig**. Choose **Properties**



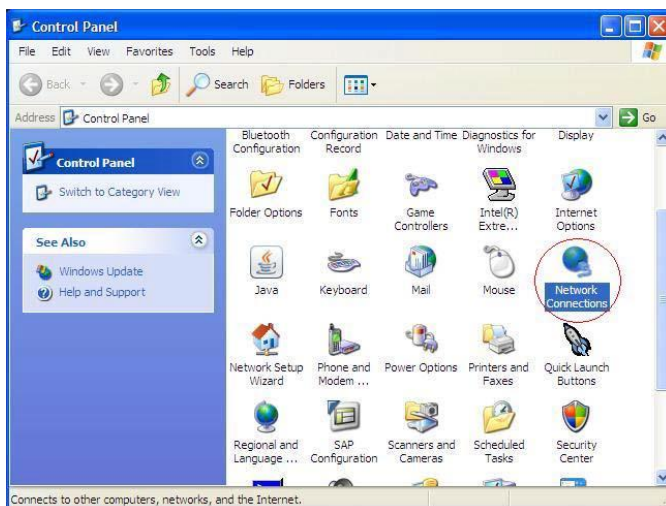
4. Change Startup type to **Automatic** and then click **Start**. Then click **OK**



5. Click on Windows XP start menu and then click **Control Panel**



6. Select **Network Connections**



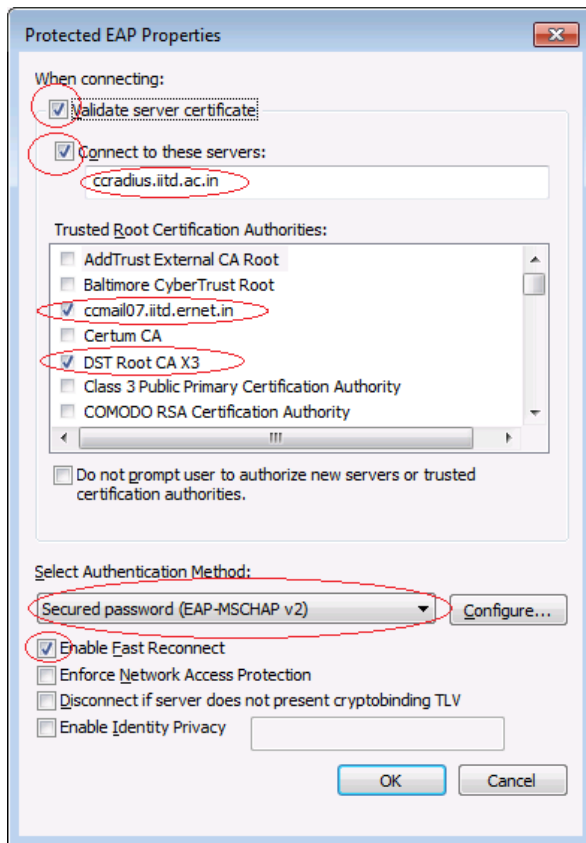
7. Right click on **Local Area Connection**. Choose **Properties**



8. Click on **Authentication** tab. Check *Enable IEEE 802.1x authentication*. Check *Cache user information for subsequent connections to this network*. Choose **Protected EAP (PEAP)** as EAP type. Then click **Settings**.



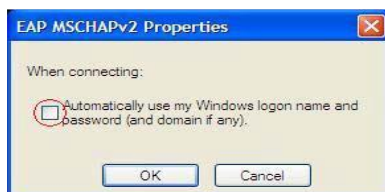
9. Check on *Validate server certificate* and *Connect to these servers*. Enter **ccradius.iitd.ac.in** at the field box. Check **ccmail07.ernet.in** and **DST Root CA X3**. Check *Enable Fast Reconnect*. Uncheck *Enable Quarantine checks*. Uncheck *Disconnect if server does not present cryptobinding TLV*. Choose **Secured password (EAP-MSCHAP v2)** as Authentication Method. Then click **Configure**.



10. If this is a Domain Computer, check *Automatically use my Windows logon name and password (and domain if any)*

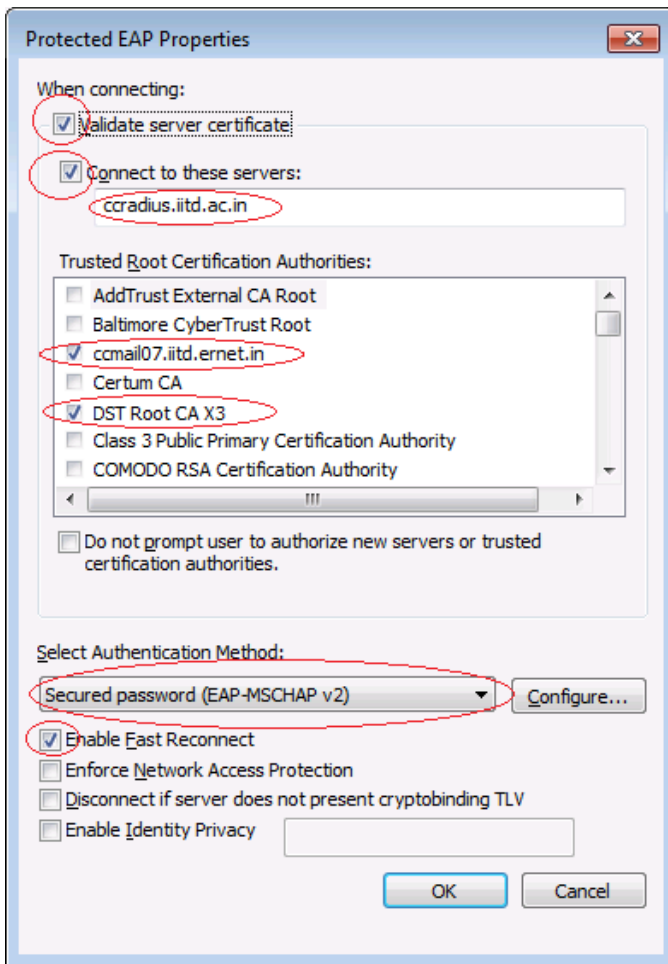


else Uncheck

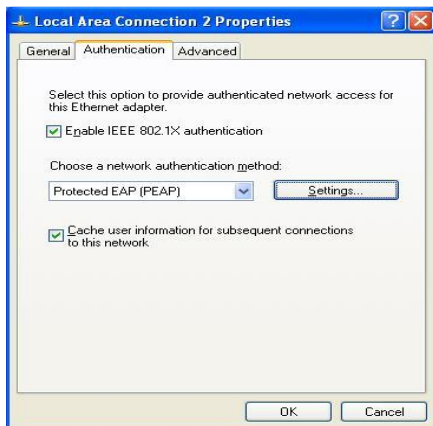


Then click **OK**

11. Click **OK**



12. Click OK



13. Click the pop up message as shown below



14. Enter Username and Password and Click OK

- **Username** : (Enter your “Username”)
- **Password** : (Enter your Password)

15. Now you are successfully connected to IITD network

