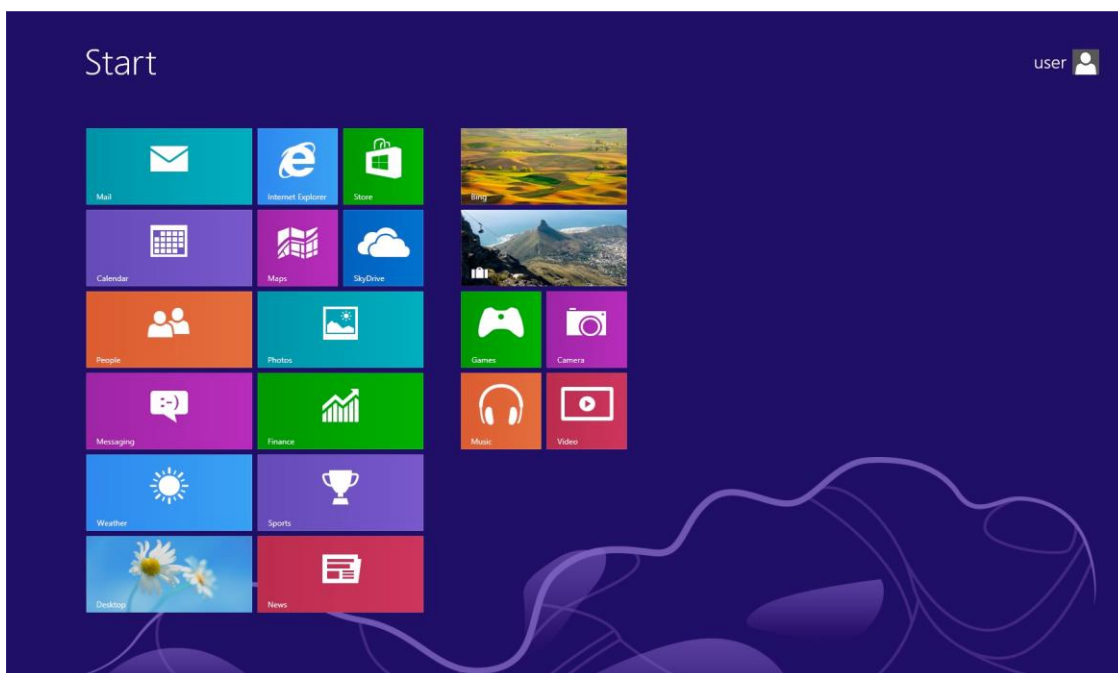
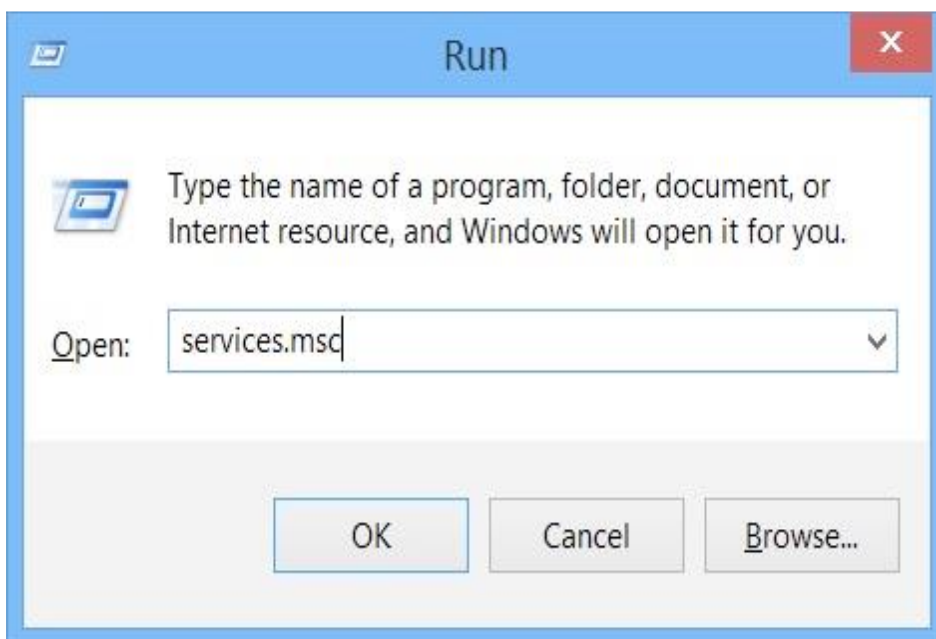


## 802.1x Configuration Guide for Windows 8

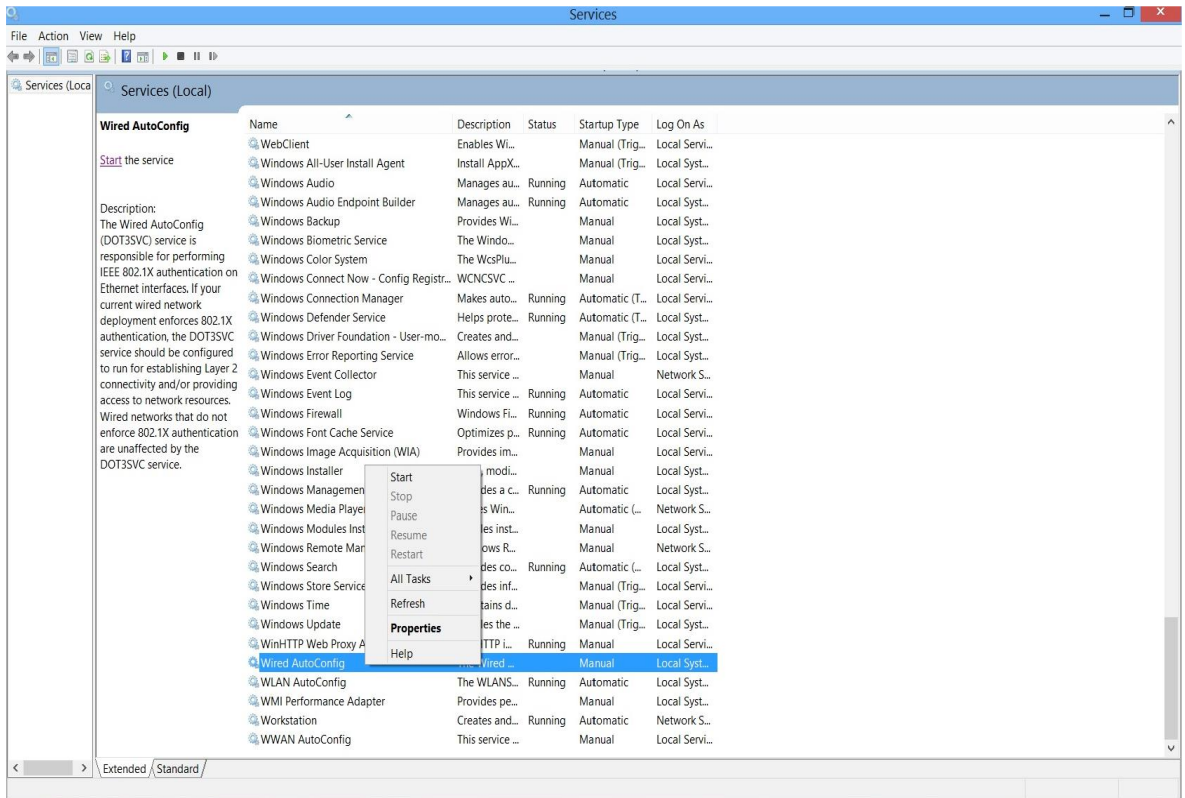
1. Press **Window-key** button on keyboard to gain access to traditional desktop.



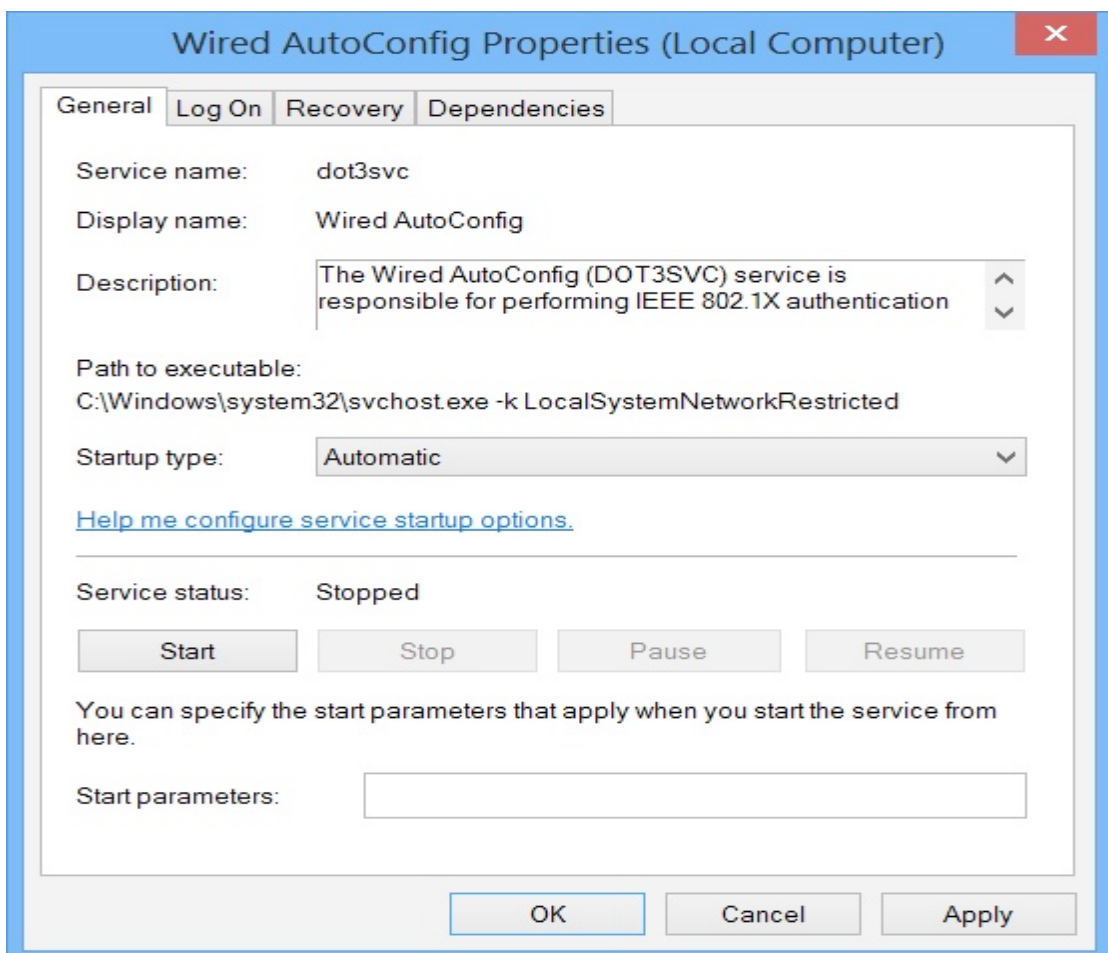
2. Hold **Window-key** button and press **R**, type **services.msc** and then click **OK**.



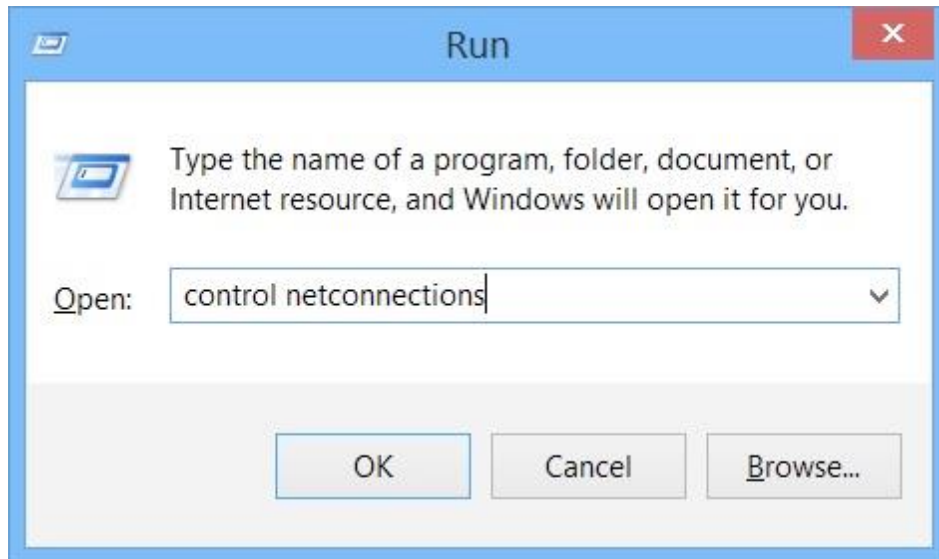
3. Right click on **Wired AutoConfig**. Choose **Properties** from the pop up menu.



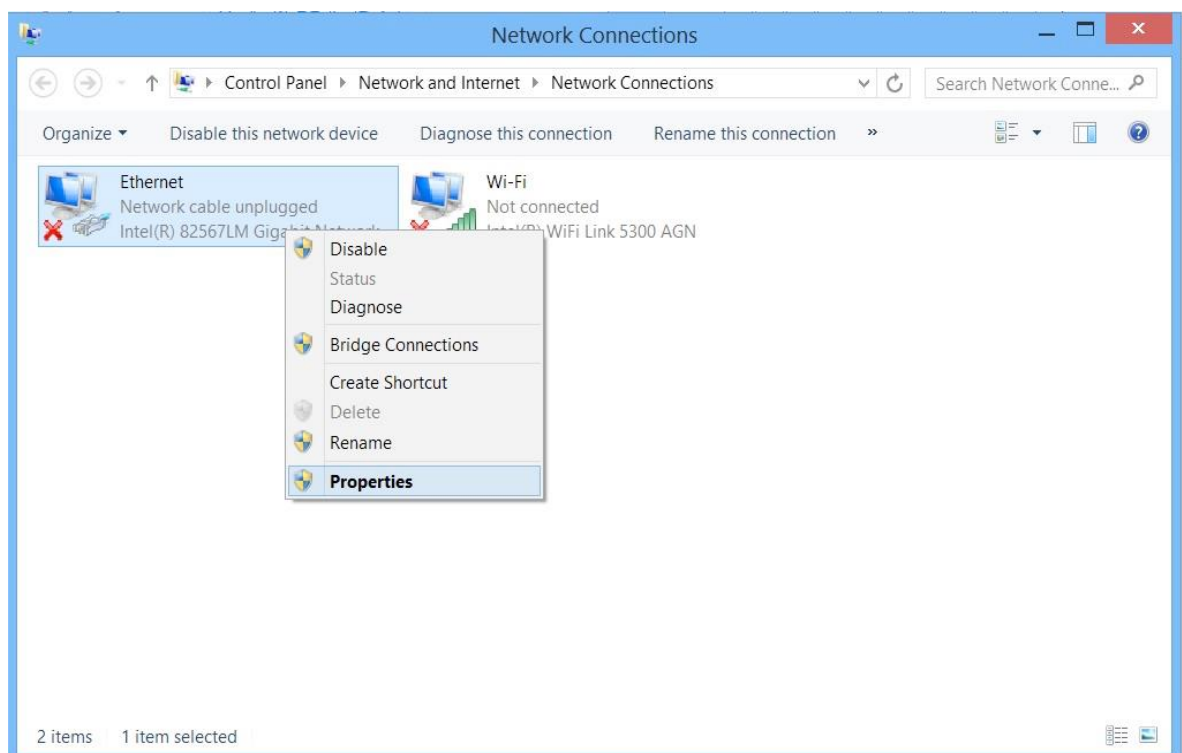
4. Change **Startup type** to **Automatic** and click **Start**. Follow by clicking **OK**



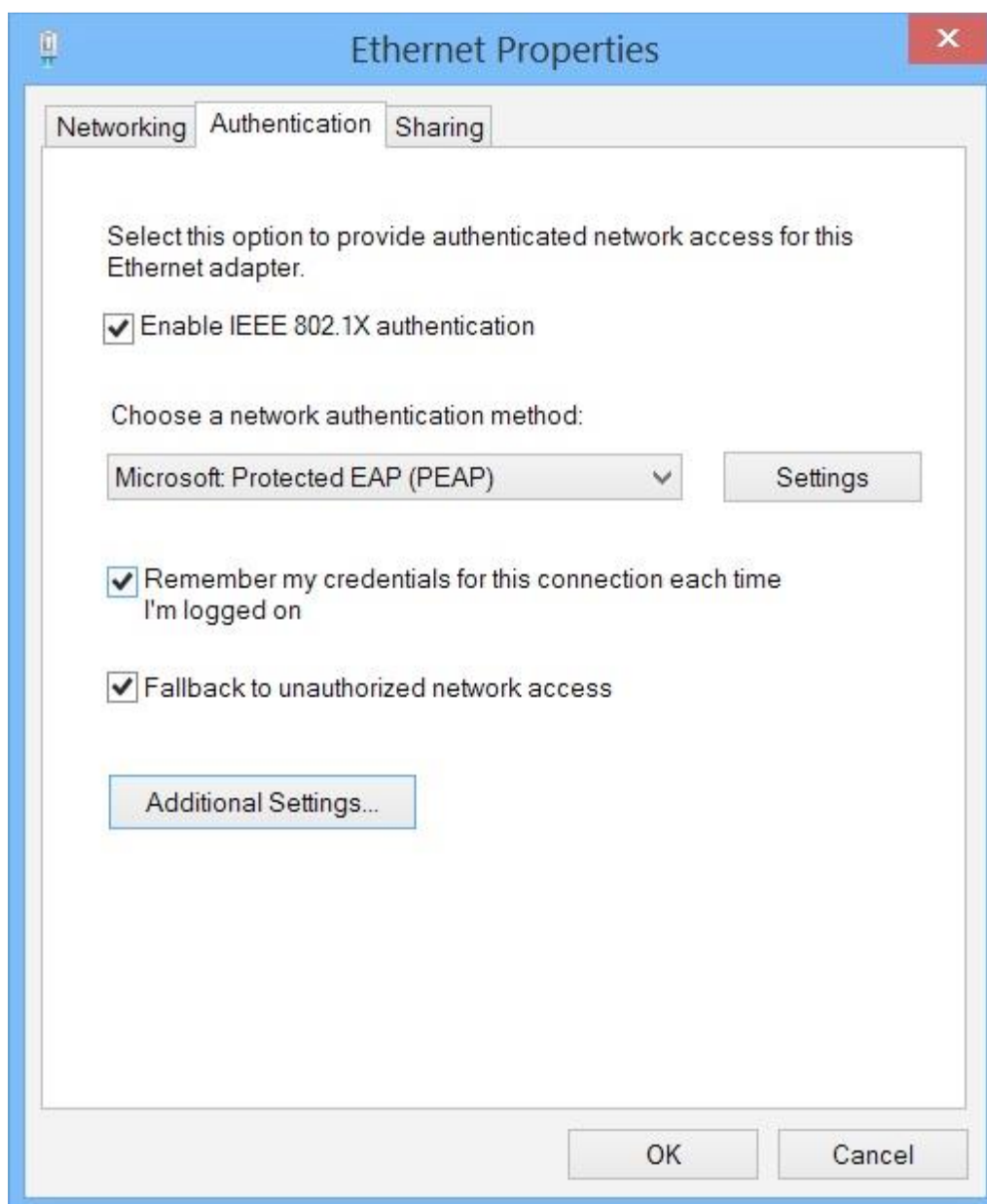
5. Hold **Window-key** button and press **R**, Type **control netconnections** and click **OK**.



6. Right click on **Local Area Connection (Ethernet)**. Choose **Properties** from the pop up menu.



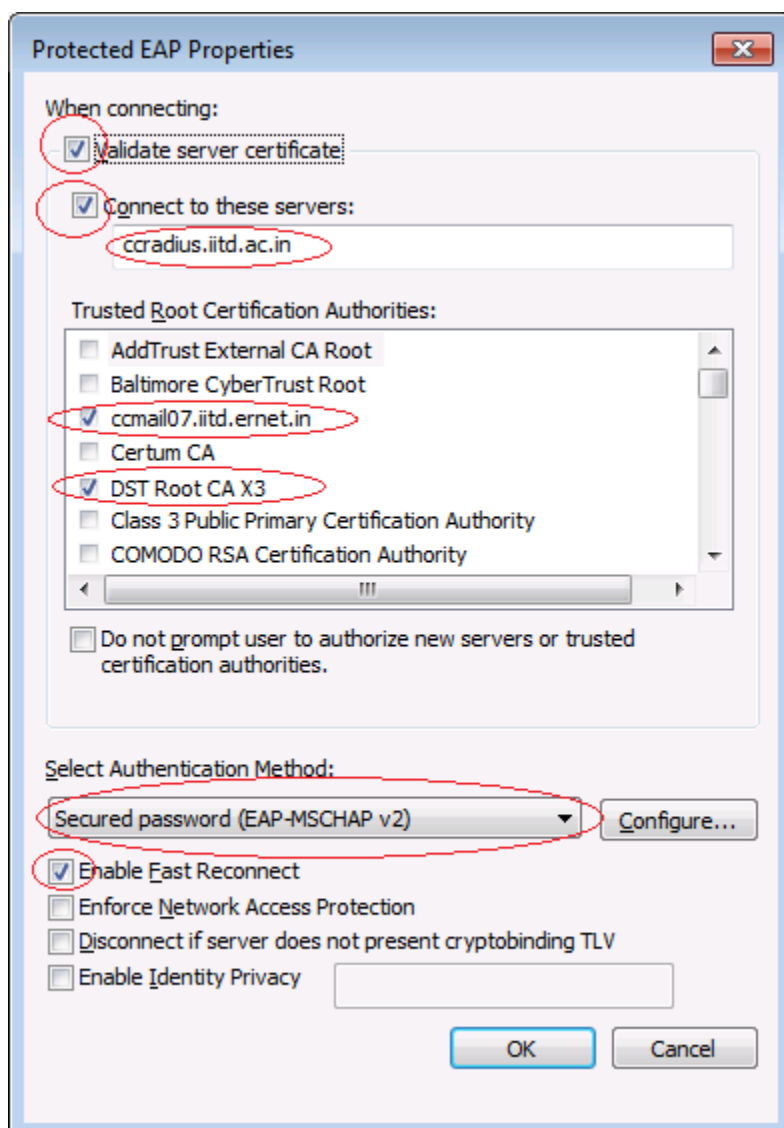
7. Click on **Authentication** tab. Check **Enable IEEE 802.1X authentication**. Check *“Remember my credentials for this connection each time I’m logged on”*. Check *Fallback to unauthorized network access*. Choose **Microsoft Protected EAP (PEAP)** as network authentication method. Then click on **Settings**.



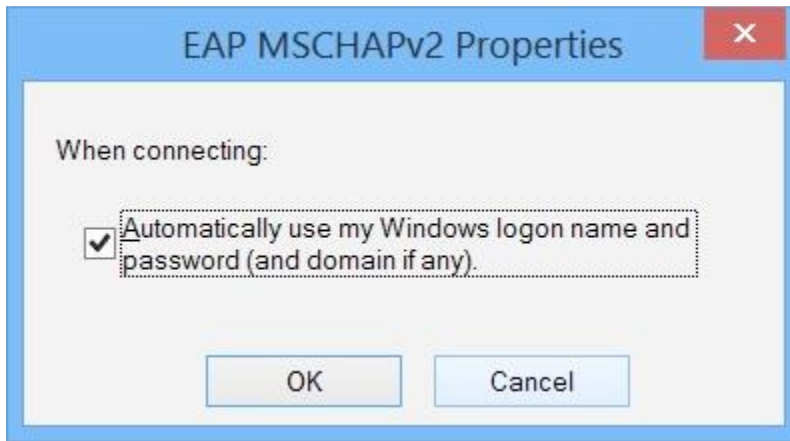
8. Check option “*Verify the server’s identity by validating the certificate*” and “*Connect to these servers*”. Enter **ccradius.iitd.ac.in** at the field box. Check **DST Root CA X3**. Check “*Enable Fast Reconnect*”.

Uncheck option “*Enforce Network Access Protection*”, “*Disconnect if server does not present cryptobinding TLV*” & “*Enable Identity Privacy*”

Choose **Secured password (EAP-MSCHAP v2)** as Authentication Method. Then click **Configure**.



9. If this is a Domain Computer, check option “*Automatically use my Windows logon name and password (and domain if any)*”.

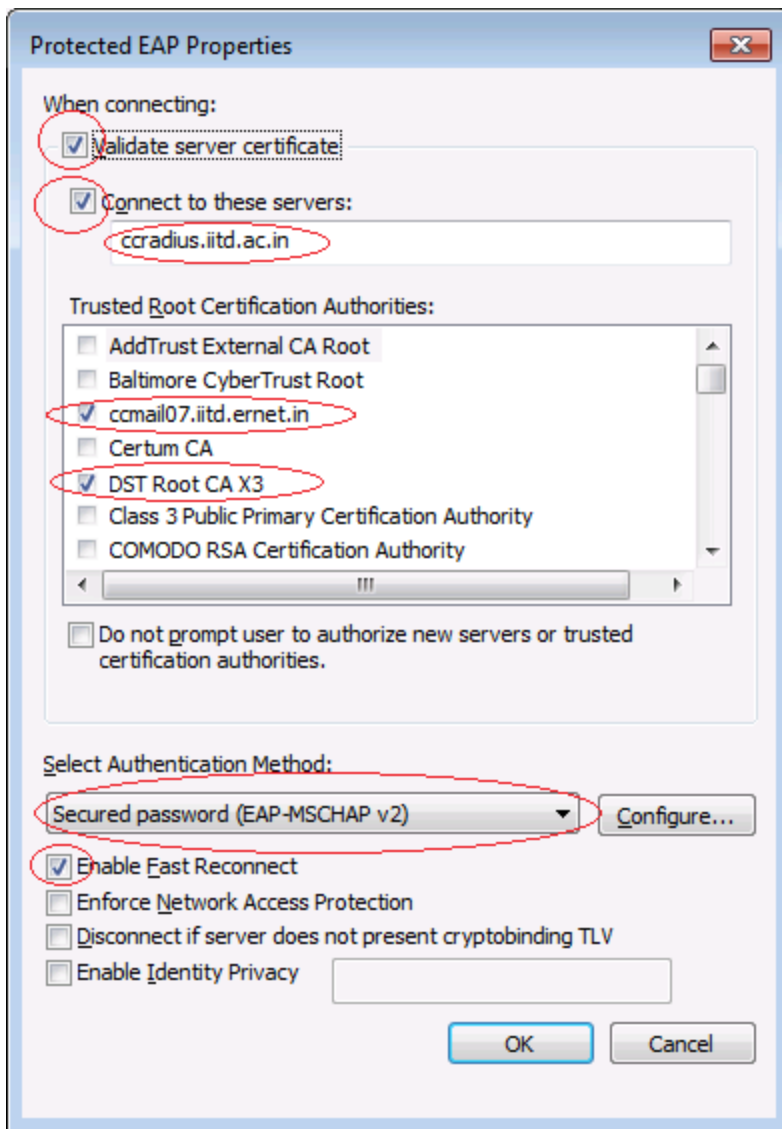


Or else uncheck option.

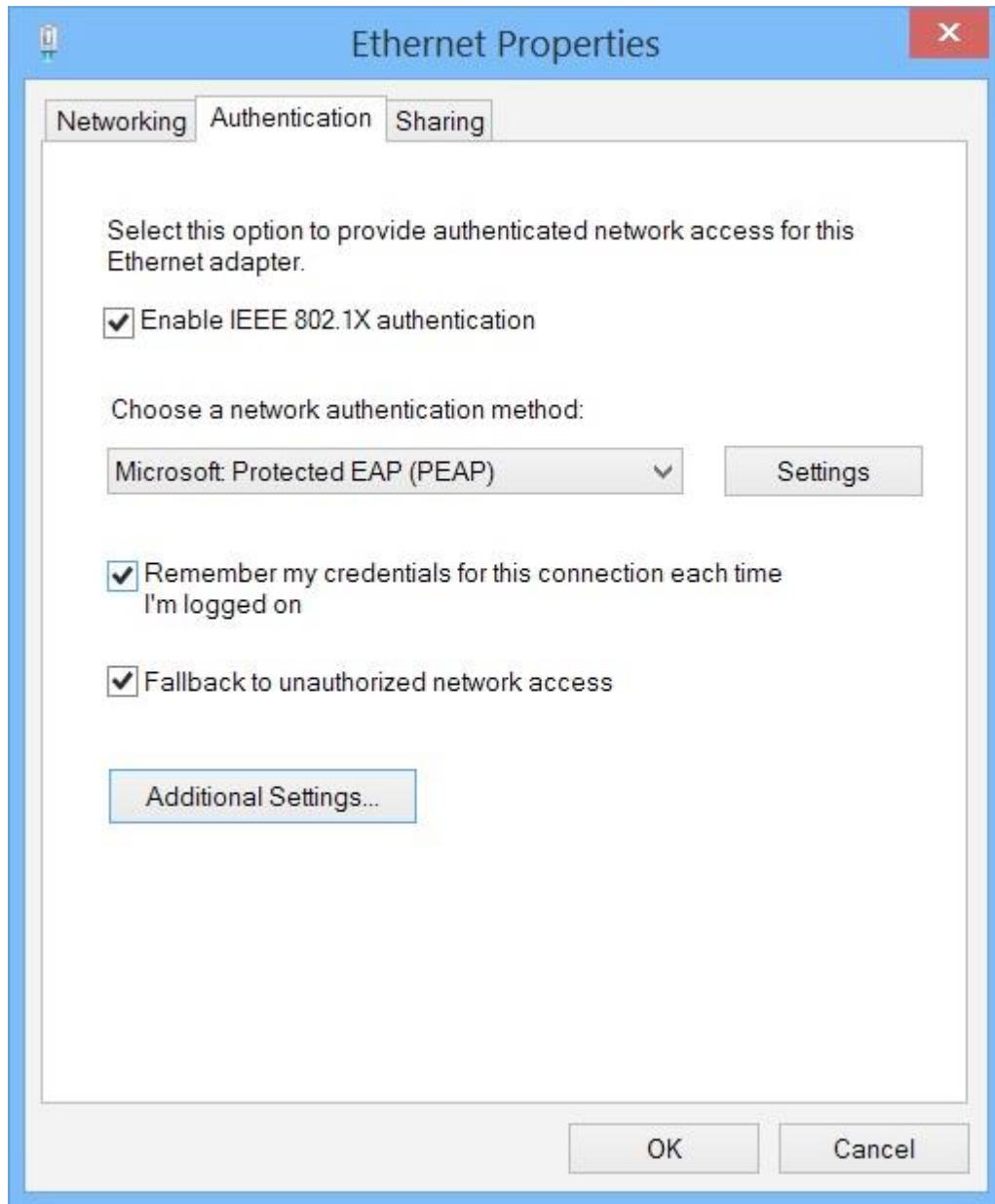


Then click **OK**.

10. Upon returning to the “*Protected EAP Properties*” menu, click **OK**.

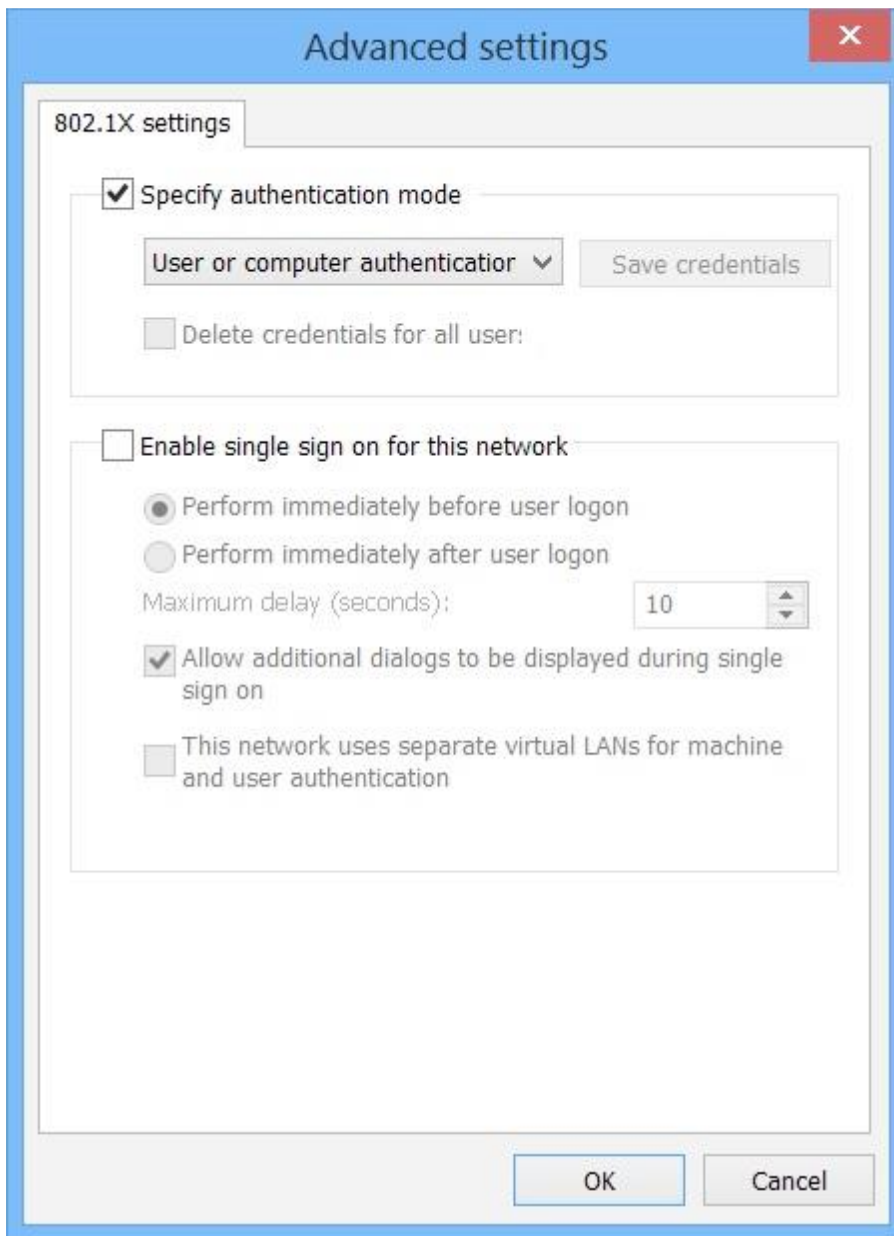


11. Click on **Additional Settings**.

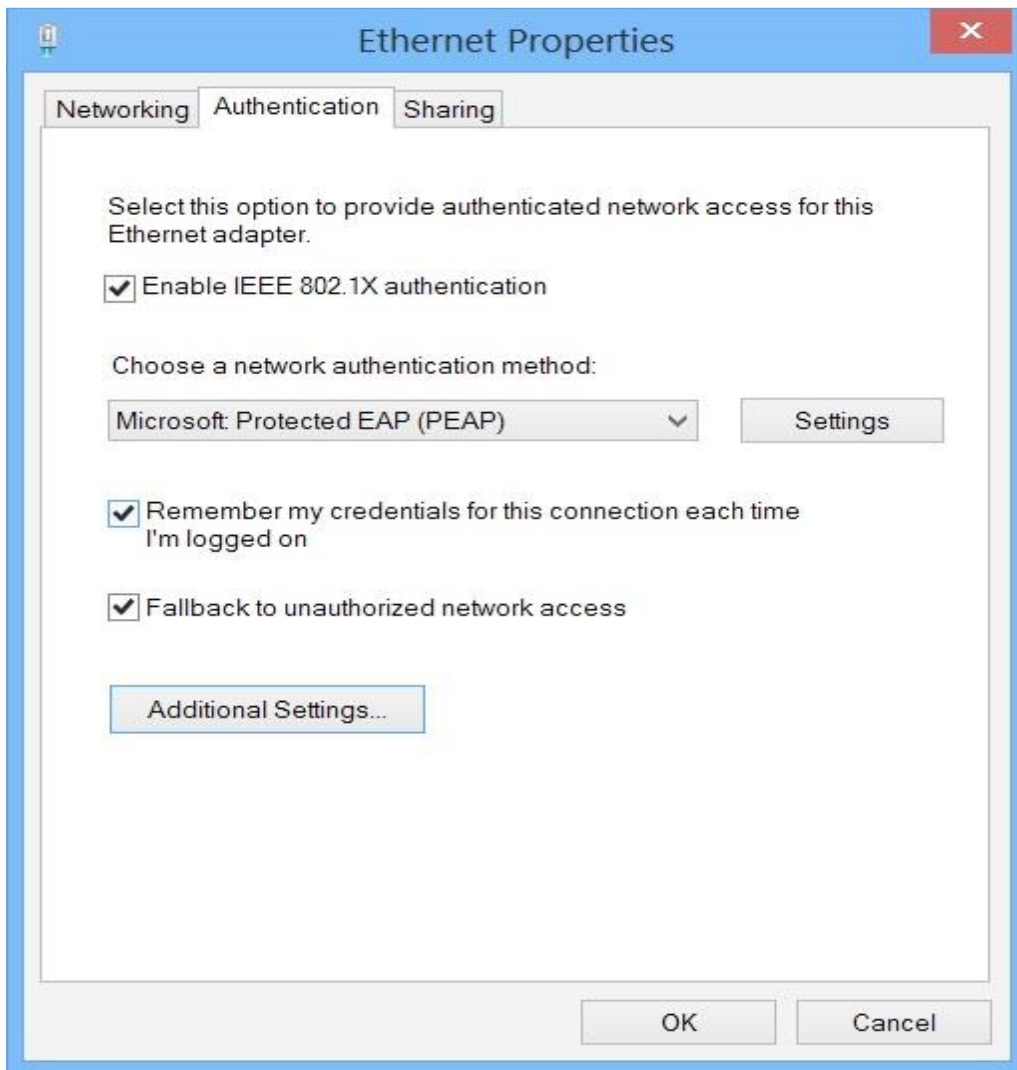


12. Check **Specify authentication mode**, Select **User or computer authentication** from the drop down menu and then click **OK**.

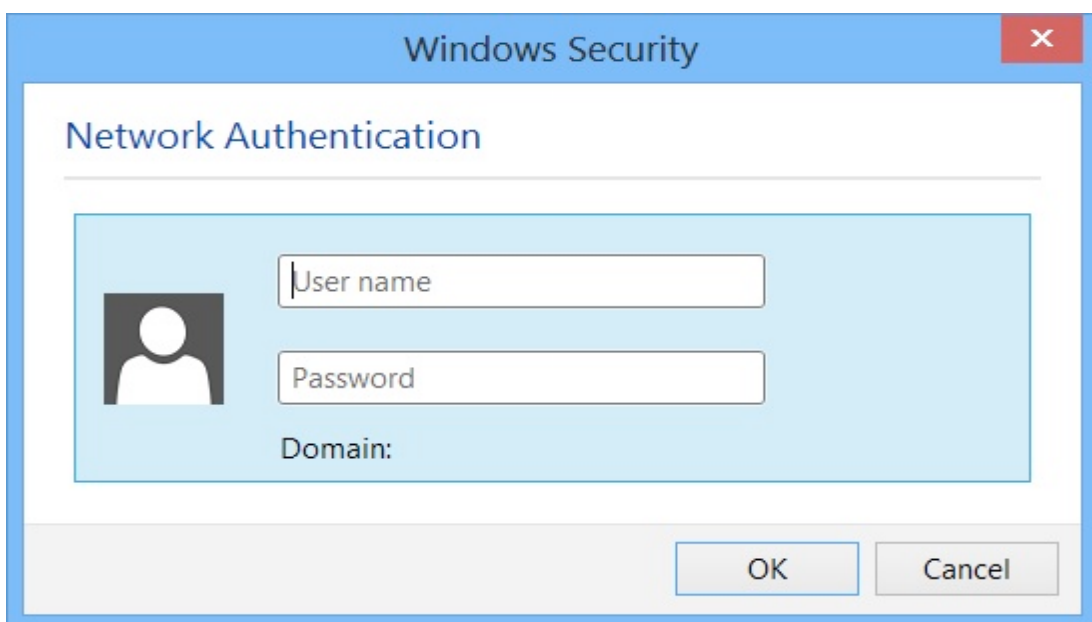




13. Click **OK**.

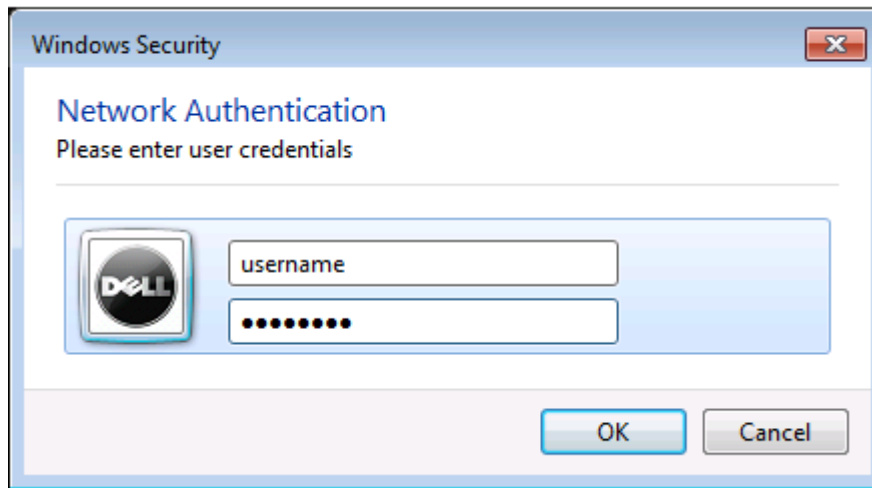


14. Once connected to the wired port, you will be able to get Network Authentication window.



15. Enter Username and Password and then click on **OK**.

- **Username** : (Enter your "Username")
- **Password** : (Enter your Password)



16. Upon authentication, user will be successfully connected to the IITD network.