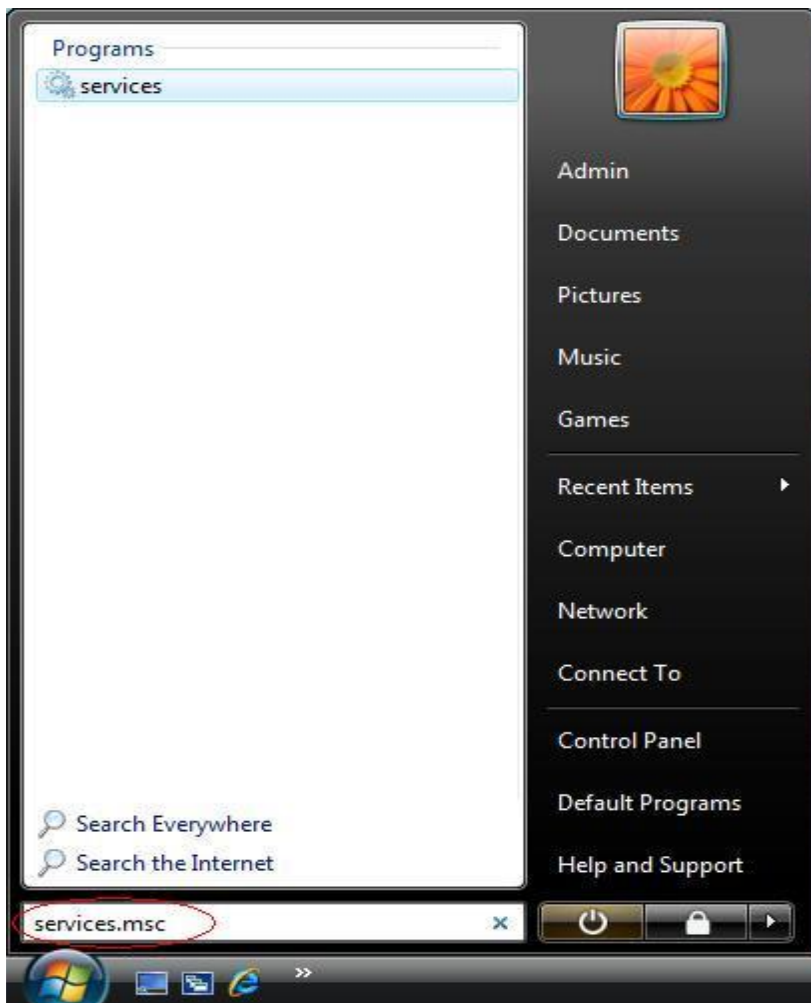
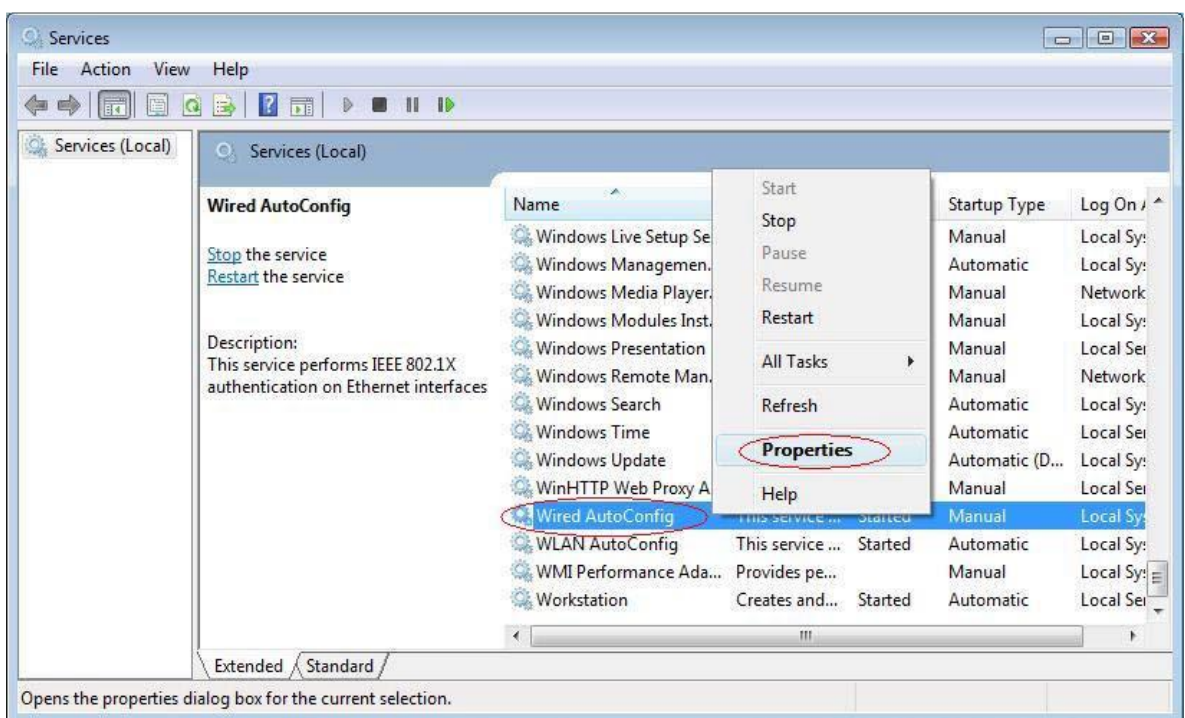


802.1x Configuration Guide for Windows Vista

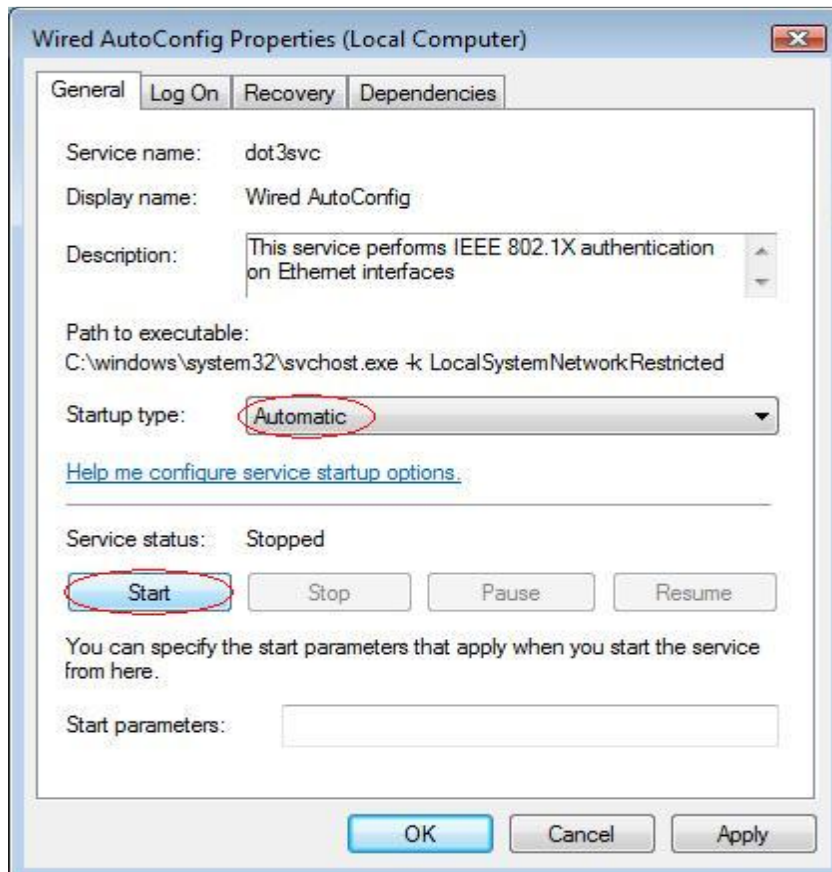
1. Click on Windows Vista start menu. Type **services.msc** and then press Enter



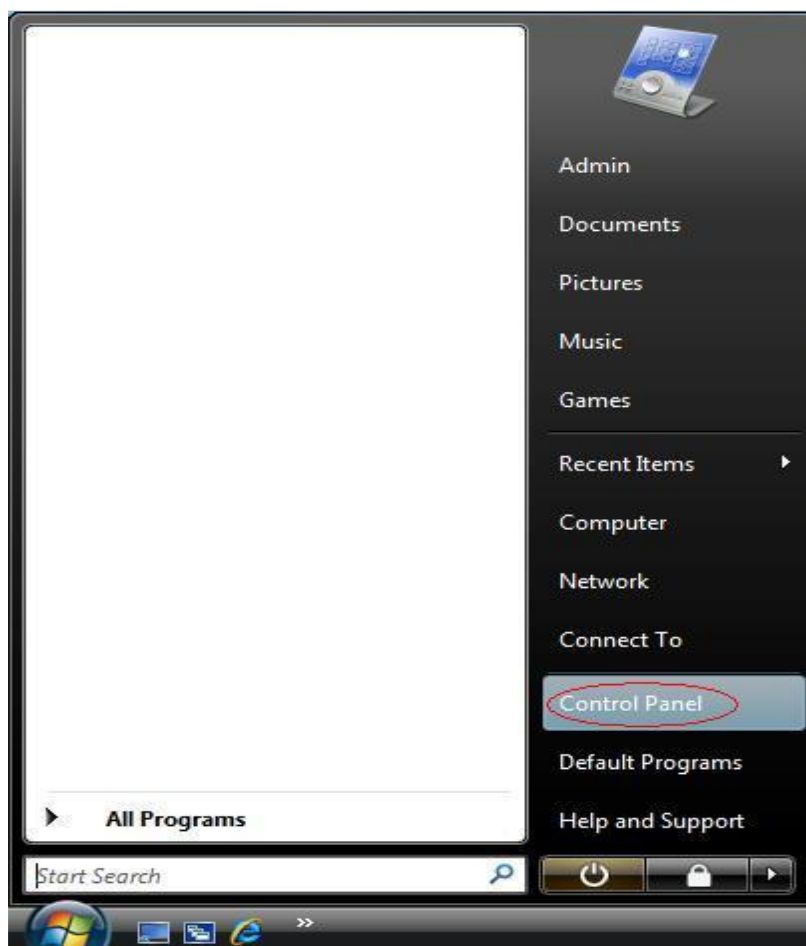
2. Right click on **Wired AutoConfig**. Choose **Properties**



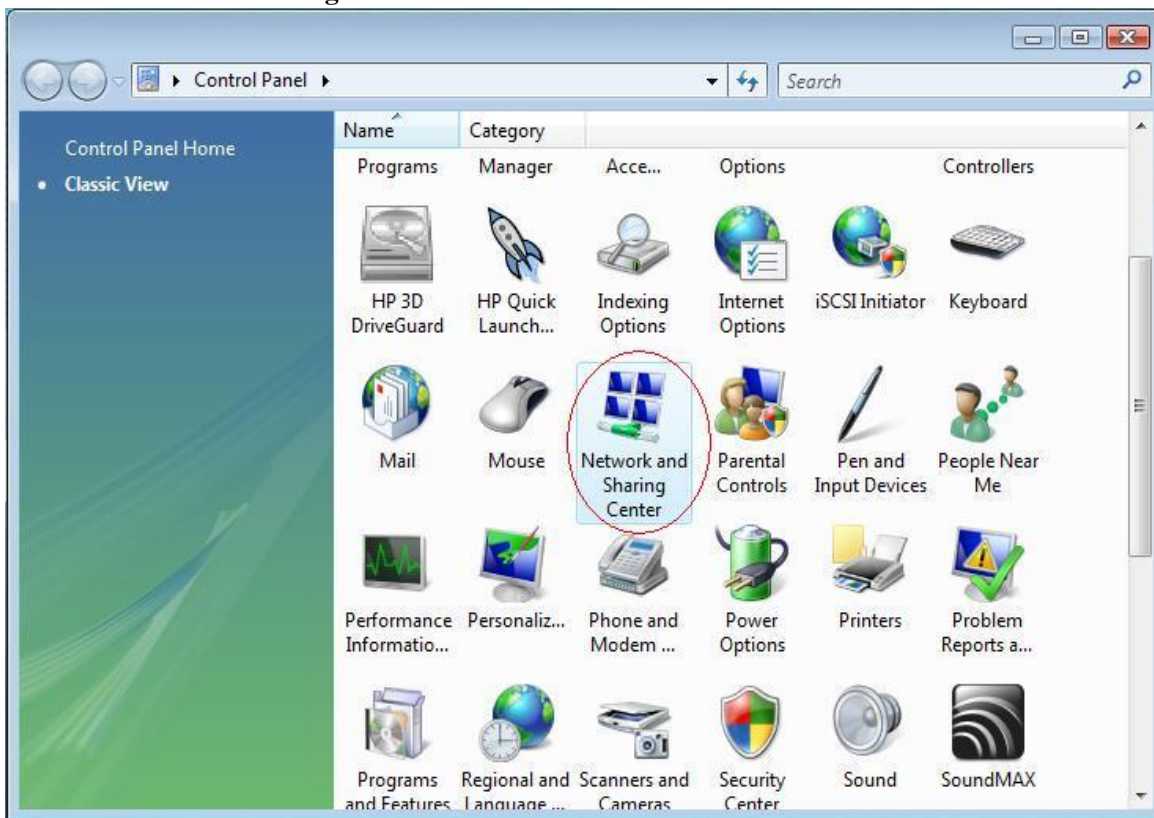
3. Change Startup type to **Automatic** and then click **Start**. Then click **OK**



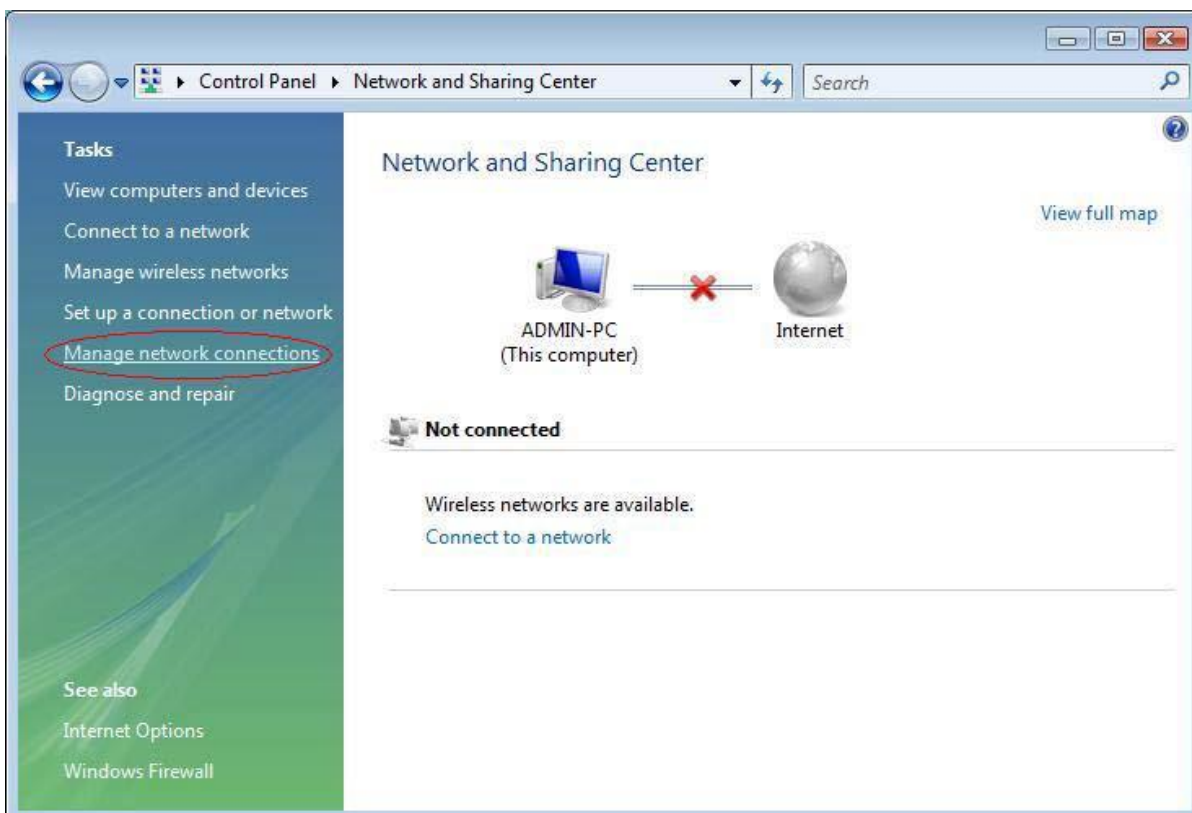
4. Click on Windows Vista start menu and then click **Control Panel**



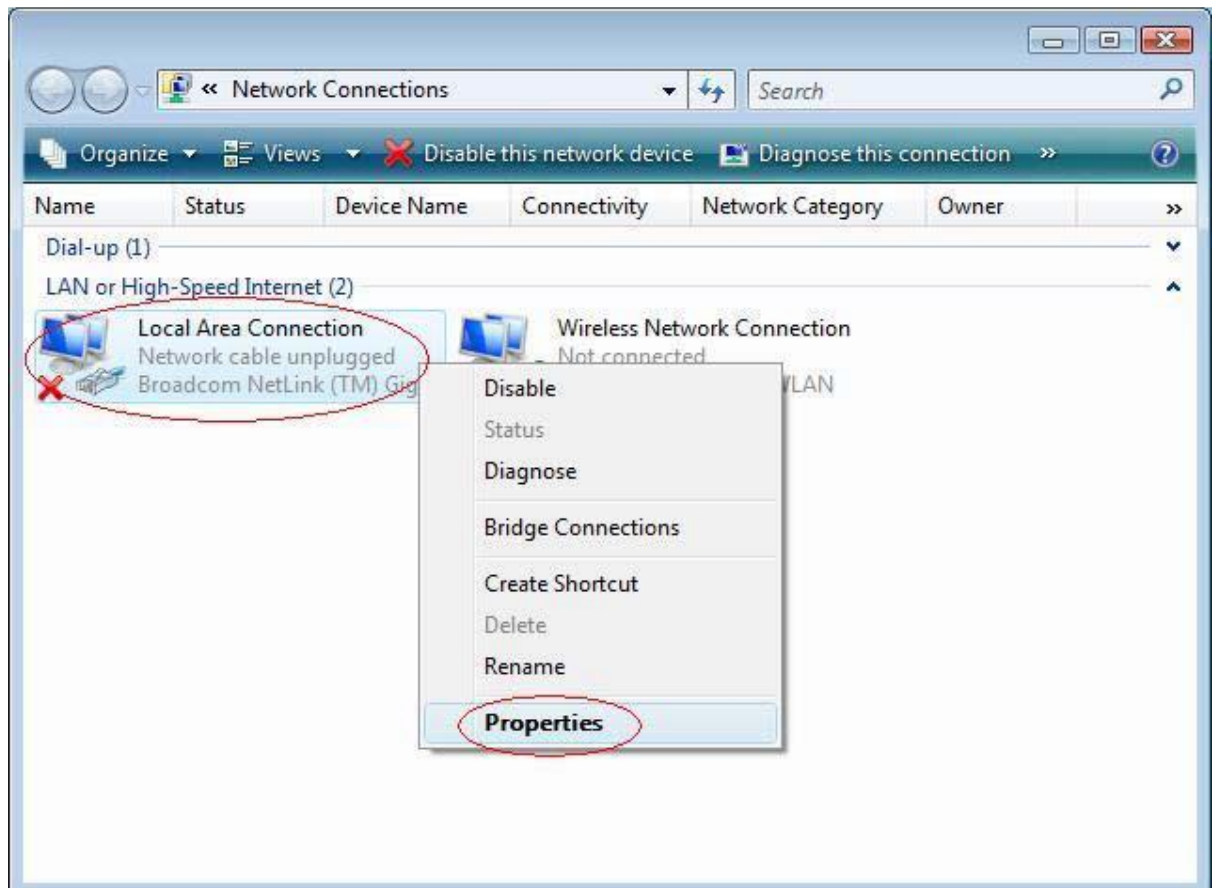
5. Select **Network and Sharing Center**



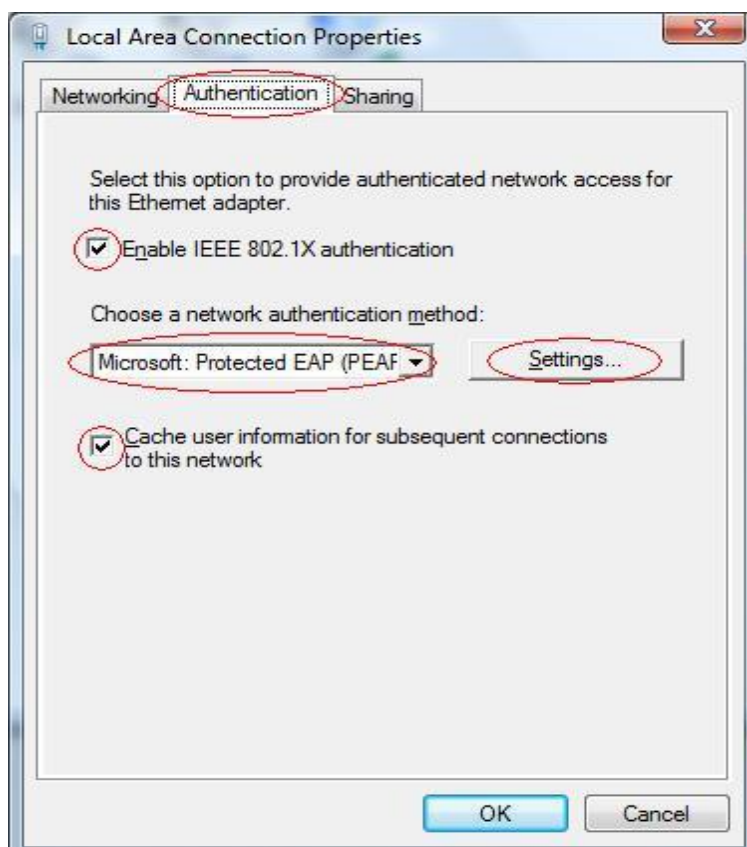
6. Click on **Manage network connections**



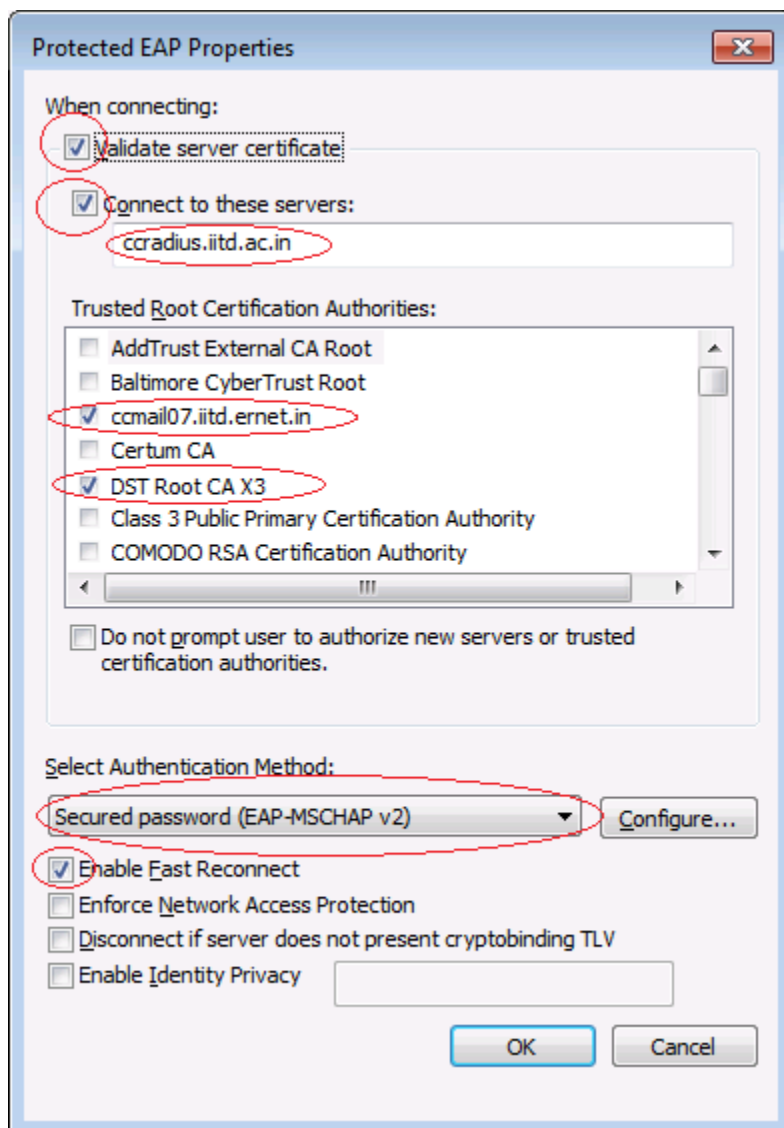
7. Right click on **Local Area Connection**. Choose **Properties**



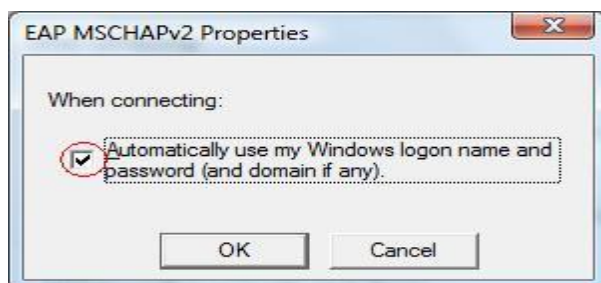
Click on **Authentication** tab. Check **Enable IEEE 802.1x authentication**. Check **Cache user information for subsequent connections to this network**. Choose Microsoft Protected EAP (PEAP) as **network authentication method**. Then click **Settings**



8. Check on *Validate server certificate* and *Connect to these servers*. Enter **ccradius.iitd.ac.in** at the field box. Check **ccmail07.iitd.ernet.in** and **DST Root X3**. Check *Enable Fast Reconnect*. Uncheck *Enable Quarantine checks*. Uncheck *Disconnect if server does not present cryptobinding TLV*. Choose **Secured password (EAP-MSCHAP v2)** as Authentication Method. Then click **Configure**



9. If this is a Domain Computer, check *Automatically use my Windows logon name and password (and domain if any)*

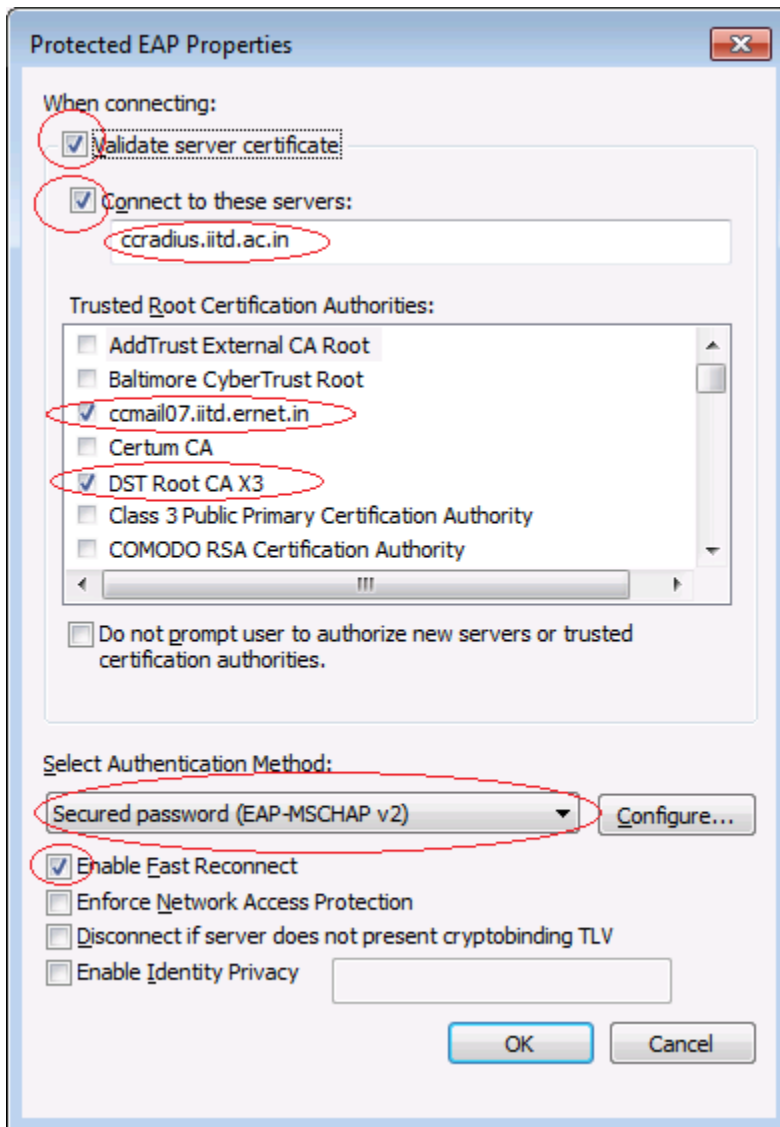


else uncheck

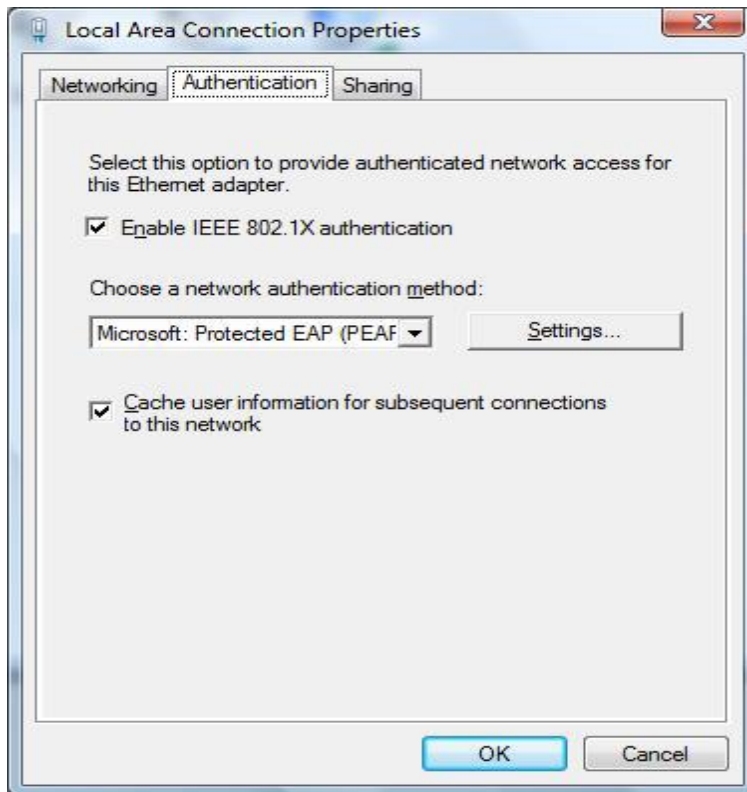


Then click OK

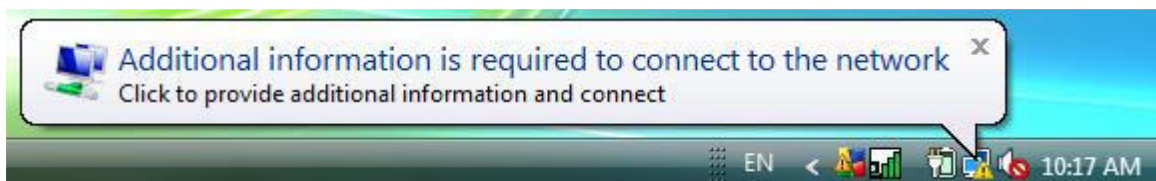
10. Click **OK**



11. Click **OK**

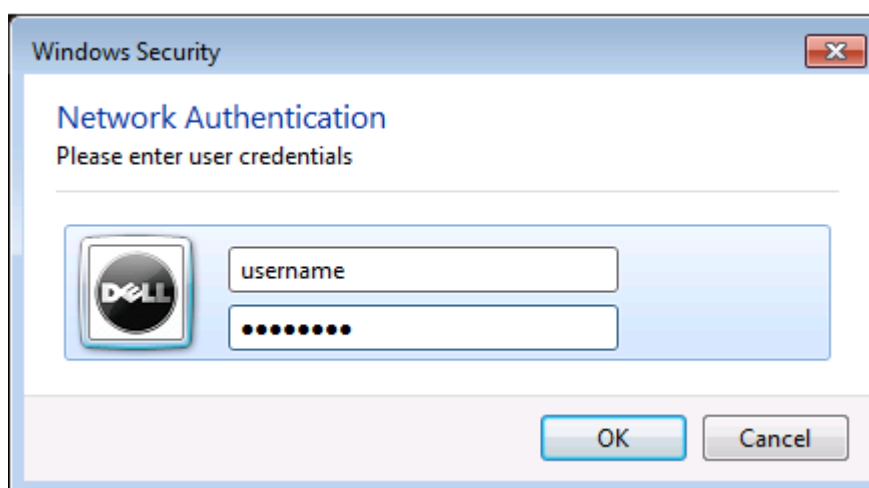


12. Click the pop up message as shown below



13. Enter Username and Password and Click **OK**

- **Username** : (Enter your "Username")
- **Password** : (Enter your Password)



14. Now you are successfully connected to IITD network